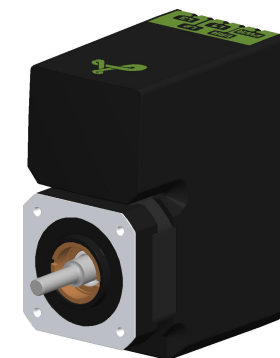
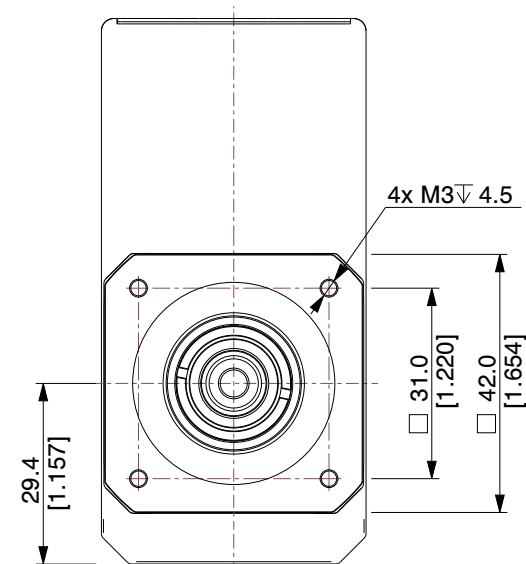
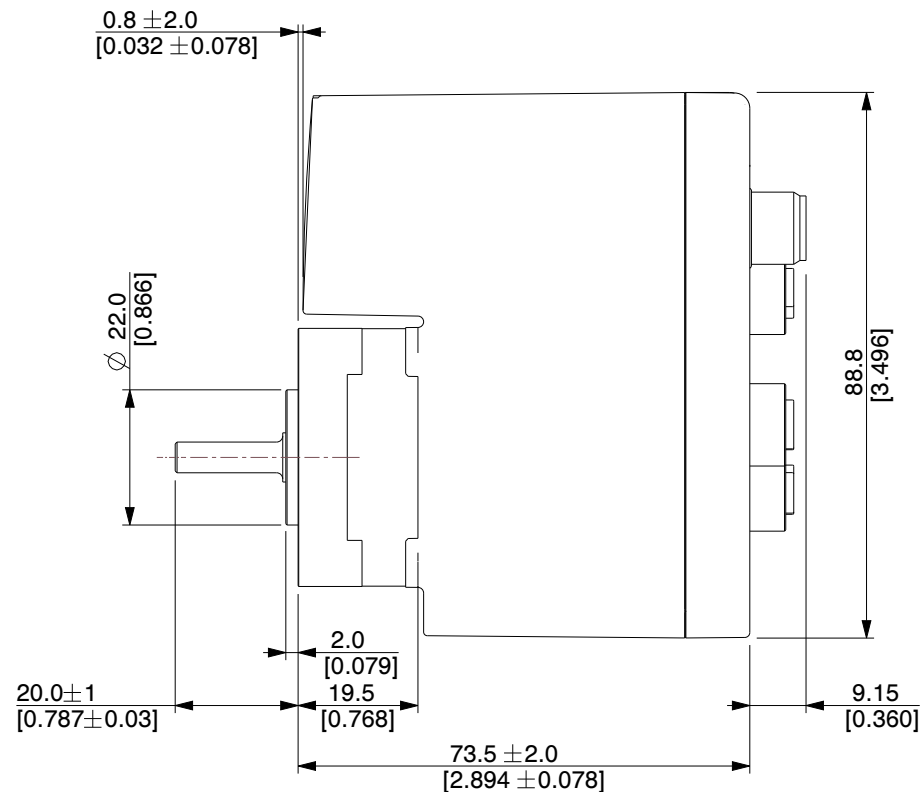
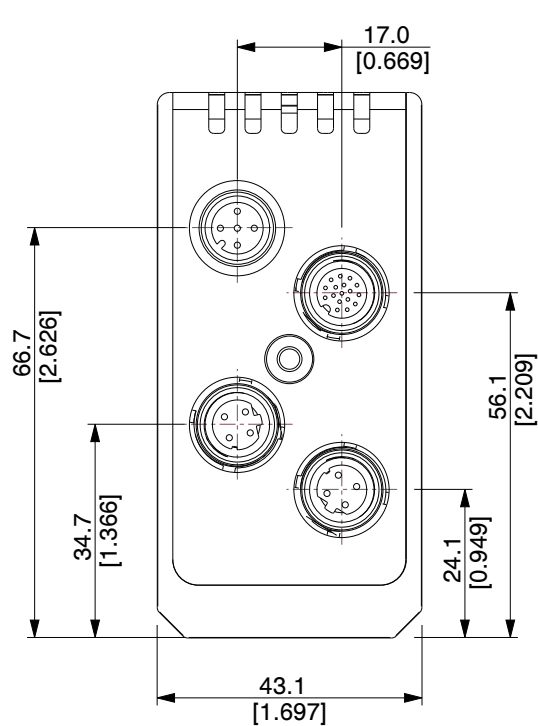
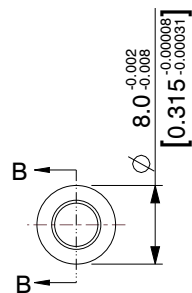


SHAFT DETAILS
SCALE 1.3



NOTES:

1. Operation Modes : Passive, Position, Gear, Velocity.
2. Encoder Type: Internal, magnetic, absolute 1 rev. Closed loop ready.
Resolution per rev.: 4096 counts / 1024 lines (quadrature output).

JVL A/S
Bregnerødvej 127
DK-3460 Birkerød
Denmark



JVL
www.jvl.dk

PART NUMBER:

MIS171Q16EIH266

PART DESCRIPTION:

Integrated Stepper Motor



A4

SCALE

NTS

UNIT

MM [Inch]

Unless specifically stated otherwise, this drawing is the property of JVL A/S and no feature embodied herein may be disclosed except as previously authorized