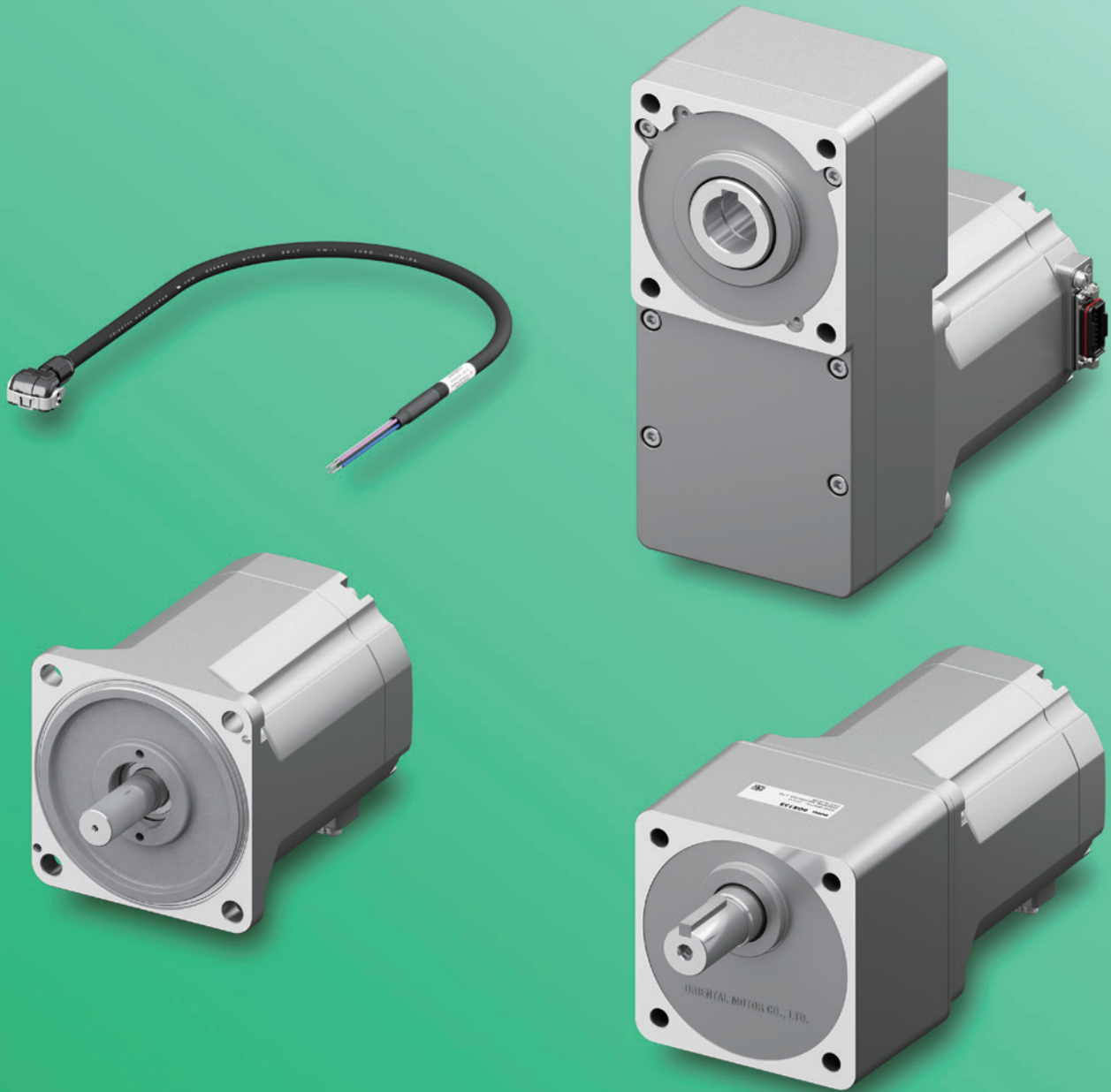


# ***Oriental motor***

## **Brushless Motor 750 W**



**Point 1**

**Can be connected to an inverter \***

Keep the currently used inverter without modification, so that there is no need to change the settings of the host controller \*It must be an inverter that can drive PM motors.



**Point 2**

**Efficiency class IE5 achieved, saving energy and reducing electricity costs**

**Point 3**

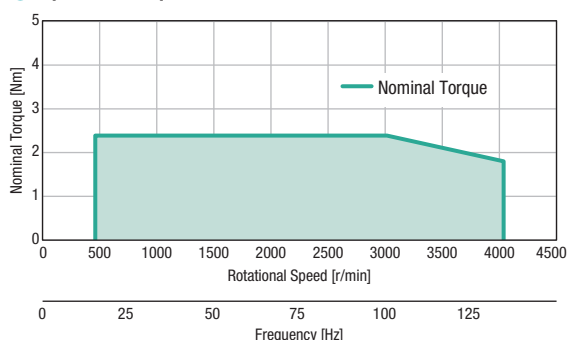
**Compact and lighter than three-phase AC motors of the same output**

Motor length: 130 mm, Mass: 3.8 kg

## Can be connected to inverters

Keep the currently used inverter without modification, so that there is no need to change the settings of the host controller.

### ● Speed/Torque Characteristic



### ● Motor - Round Shaft Type

**BL2M6750CHP-AS** (Output Power 750W)

### ● Inverter - By Mitsubishi Electric Corporation

FR-E820-0.75K-1

(Three-phase 200VAC, PM motor driveable type)

\* This is a reference example.

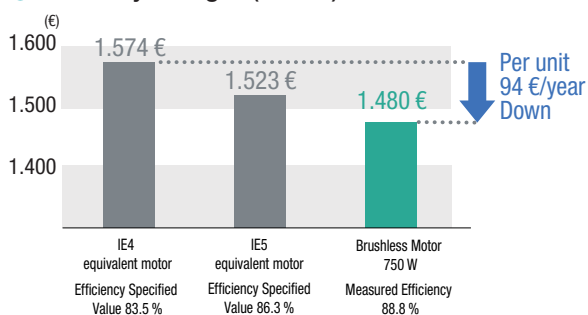
The inverter can be used with the best torque characteristics by setting the inverter parameter values to match the motor.

Please contact us for combination characteristic data and parameter setting examples for motors and inverters from other manufacturers.

## Efficiency class IE5, energy savings and reduced electricity costs

Achieves efficiency class IE5. Contributes to reduced electricity costs and CO<sub>2</sub> emissions.

### ● Electricity Charges (annual)



- Motor output: 750W
- Operating hours: 8760 hours (24 hours a day, 365 days a year)
- Electricity price: ~20 Cent/kWh (avg. price industrial customer 2024 )

\* The specified values for IE4/IE5 are the efficiency classes specified in the international standard IEC TS 60034-30-2.

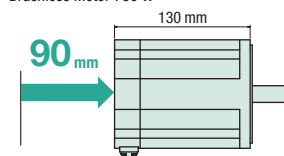
\* The specified values for IE4/IE5 are the values at rated rotational speeds of 1801-6000 r/min. The efficiency values for brushless motors are the values at rated torque at rated rotational speed.

## Compact and Lightweight

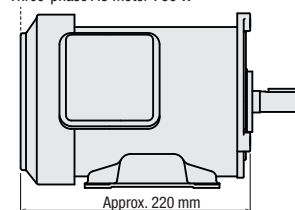
This motor is much more compact than a three-phase AC motors of the same output.

### ● Motor length: 90 mm less

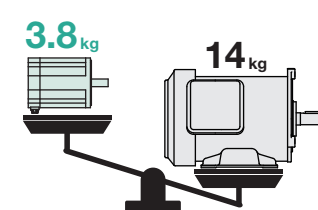
Brushless Motor 750 W



Three-phase AC motor 750 W



### ● Motor mass: 10.2 kg less



## Product Line

### ● Motor

#### ◇ Combination Type

#### ◇ Parallel Shaft Gearhead

| Product Name          | Gear Ratio        |
|-----------------------|-------------------|
| <b>BL2M6750CHP-□S</b> | <b>5, 10</b>      |
|                       | <b>15, 20, 30</b> |
|                       | <b>50</b>         |

● The □ in the part number indicates the reduction ratio.



#### ◇ Combination Type

#### ◇ Hollow Shaft Flat Gearhead

| Product Name            | Gear Ratio        |
|-------------------------|-------------------|
| <b>BL2M6750CHP-□FRS</b> | <b>5, 10</b>      |
|                         | <b>15, 20, 30</b> |
|                         | <b>50</b>         |

● The □ in the part number indicates the reduction ratio.



#### ◇ Round Shaft

| Product Name          |
|-----------------------|
| <b>BL2M6750CHP-AS</b> |



#### ◇ Connection Cable (0.5 m)

| Product Name     |
|------------------|
| <b>CC005BYFF</b> |



## Orientalmotor

Specifications are subject to change without notice. This catalogue was published in February 2025.

www.orientalmotor.eu

EN

UK

DE

IT

ES

Customer Service Center (German & English)

Free Hotline 00800-22 55 66 22 - info@orientalmotor.de

These products are manufactured at plants certified with the international standards ISO 9001 (for quality assurance) and ISO 14001 (for systems of environmental management).