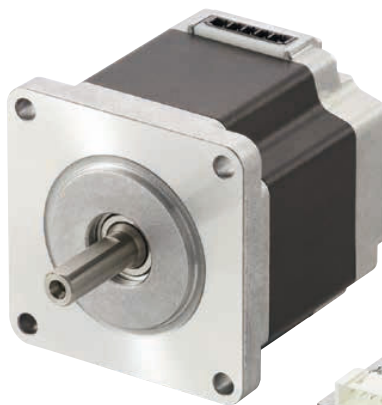


## 5-Phase Stepping Motor and Driver Package

# CVK Series

## SC Type



We newly introduced the drivers for the stepping motor **CVK** Series which can be easily operated by switching digital CW/CCW input.

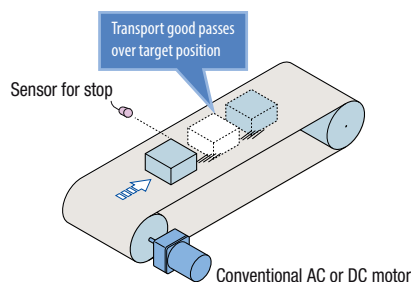
This product is especially designed for transfer applications like conveyor systems. Typical scenarios are that speed controlled motors are being used for transporting goods on the conveyor. For achieving of a high accuracy and precise stop position, usually sensors are installed for stopping at a target position. While transporting goods with different size, there is a need to change the position of the sensor for adjusting the target position.

**High repetitive  
stopping accuracy  
even if load varies**

### Features

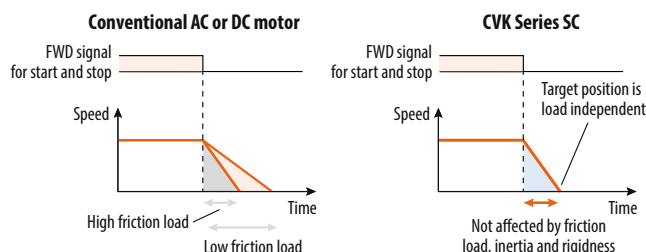
- Adjustable acceleration and deceleration
- High stopping accuracy
- Holding torque at standstill
- Speed 0.02 rpm to 600 rpm
- Torque is up to 6 Nm even at low speed\*

\*Geared types optional. For details, please contact your nearest Oriental Motor sales office.



### Overrun comparison

Motor type	Overrun [rotations]	
	Without load	With load
Induction motor	30 to 40	> 40
Induction motor with magnetic brake	2 to 3	> 3
CVK Series SC	± 1 degree	± 1 degree



### Motor



Frame size		
28mm	42mm	60mm
Rated Torque [N·m]		
max. 0.091	max. 0.5	max. 2.1

Motor Product Code		
PKP523N12□	PKP543N18□2	PKP564FN24□2
PKP525N12□	PKP544N18□2	PKP566FN24□2
—	PKP545N18□2	PKP569FN24□2
—	PKP546N18□2	—

● Either **A** (Single Shaft) or **B** (Double Shaft) indicating the configuration is specified where the box □ is located in the product name.

### Driver

A driver for 5-phase **PKP** Series is available. In combination with a full-time microstep driver low vibration can be realized.

- Right Angle Type with Mounting Plate Orientation of the connector becomes sideways.
- The direction of the connector with the mounting plate will be upward.



Driver Product Code	
Right Angle Connector Type	Straight Connector Type
CVD512BR-KSC	CVD512B-KSC
CVD518BR-KSC	CVD518B-KSC
CVD524BR-KSC	CVD524B-KSC

## Product Number Code

### Motor

**PKP 5 6 6 F N 24 A 2**

① ② ③ ④ ⑤ ⑥ ⑦ ⑧ ⑨

①	Series Name	<b>PKP: PKP Series</b>
②	<b>5: 5-Phase</b>	
③	Motor Frame Size	<b>2:</b> 28 mm <b>4:</b> 42 mm <b>6:</b> 56.4mm (60 mm when the motor identification is "F")
④	Motor Case Length	
⑤	Motor Classification	<b>F:</b> Motor Frame Size 60 mm
⑥	Number of Lead Wires	<b>N:</b> 5 Leads
⑦	Winding Specifications	
⑧	Motor Shaft Type	<b>A:</b> Single Shaft <b>B:</b> Double Shaft
⑨	Cable Classification	

### Driver

**CVD 5 18 B R - K SC**

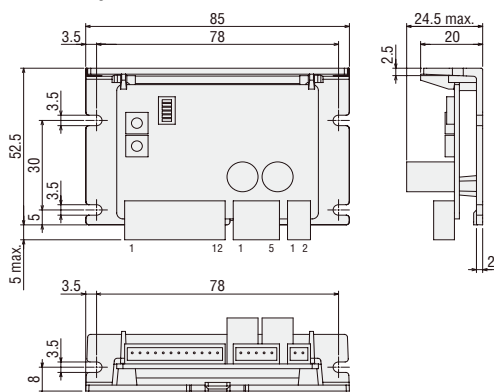
① ② ③ ④ ⑤ ⑥ ⑦

①	Series Name	<b>CVD: CVK Series Driver</b>
②	<b>5: 5-Phase</b>	
③	Rated Current	
④	Driver Identification	<b>B:</b> With Mounting Plate
⑤	Driver Configuration	<b>R:</b> Right Angle
⑥	Connector Configuration	<b>K:</b> DC Power Supply
⑦	Power Supply Input	<b>SC:</b> Speed Control

Connection cable needs to be ordered separately.

## Dimensions (Unit = mm)

Mass: 0.06 kg



### Accessories

Connector Housing: 51103-0200 (Molex)  
51103-0500 (Molex)  
51103-1200 (Molex)  
Contact: 50351-8100 (Molex)

# Orientalmotor

These products are manufactured at plants certified with the international standards **ISO 9001** (for quality assurance) and **ISO 14001** (for systems of environmental management).

Specifications are subject to change without notice. This catalogue was published in July 2018.

### ORIENTAL MOTOR (EUROPA) GmbH

www.orientalmotor.de  
Tel: 0211-520 670 0  
Fax: 0211-520 670 99



### Spanish Office

www.orientalmotor.es  
Tel: +34 918 266 565

### ORIENTAL MOTOR (UK) LTD.

www.oriental-motor.co.uk  
Tel: 01256-347 090  
Fax: 01256-347 099



### ORIENTAL MOTOR SWITZERLAND AG

www.orientalmotor.ch  
Tel: 056-560 504 5  
Fax: 056-560 504 7



### ORIENTAL MOTOR ITALIA s.r.l.

www.orientalmotor.it  
Tel: 02-939 063 46  
Fax: 02-939 063 48



### ORIENTAL MOTOR (FRANCE) SARL

www.orientalmotor.fr  
Tel: 01-478 697 50  
Fax: 01-478 245 16



Other countries: www.orientalmotor.eu

## Customer Service Center (Support in German & English)

00800-22 55 66 22\*  
CA LL OM CC

Mon-Thu: 08:00 - 17:30 CET Friday: 08:00 - 16:00 CET  
\* Free Call Europe

info@orientalmotor.de