



Product	Nominal torque	Self-holding torque	Nominal rated speed	Nominal power output
PSW 301-8	1 Nm	0.5 Nm	180 min <sup>-1</sup>	25 W
PSW 302-8	2 Nm	1 Nm	100 min <sup>-1</sup>	25 W
PSW 305-8	5 Nm	2.5 Nm	35 min <sup>-1</sup>	25 W

## Data interfaces

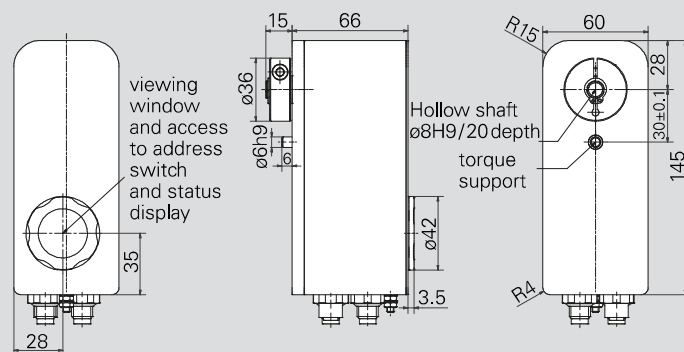
CANopen, PROFIBUS DP, DeviceNet, Modbus RTU, Sercos, EtherCAT, PROFINET, EtherNet/IP, POWERLINK, IO-Link

Start-up duration	20 % (basis time 600 s) at nominal torque
Mode of operation	S3
Supply voltage	24 VDC ± 10 % Galvanically separated between control and motor and bus
Nominal current	2.2 A
Power consumption (control unit)	0.1 A
Positioning accuracy Absolute measurement of position taken directly at the output shaft	0.9°
Positioning range	250 rotations not subject to mechanical limits
Shock resistance in accordance with IEC/DIN EN 60068-2-27	50 g 11 ms
Vibration resistance in accordance with IEC/DIN EN 60068-2-6	10..55 Hz 1.5 mm/ 55..1 000 Hz 10 g/ 10..2 000 Hz 5 g
Output shaft	8 mm solid shaft or 8 mm hollow shaft with adjustable collar
Maximum axial force	20 N
Maximum radial force	40 N
Ambient temperature	0..45°C
Storage temperature	-10..70°C
Protection class	IP68 at standstill, IP66 during rotation (tested with water)*
Material	stainless steel
Weight	650 g
Certificates	CE

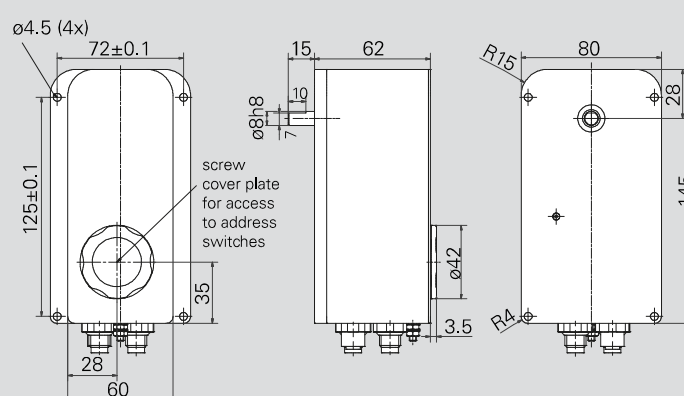
\* Welded V2A housing, Output shaft sealed with quad-ring

The order key and accessories can be found on p. 18 / 19.

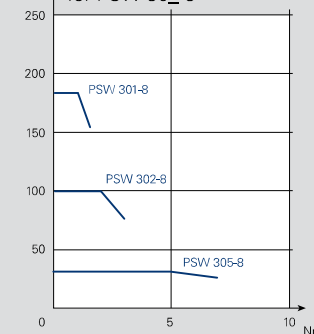
## PSW 30\_-8 (with hollow shaft)



## PSW 30\_-8-V (with solid shaft)



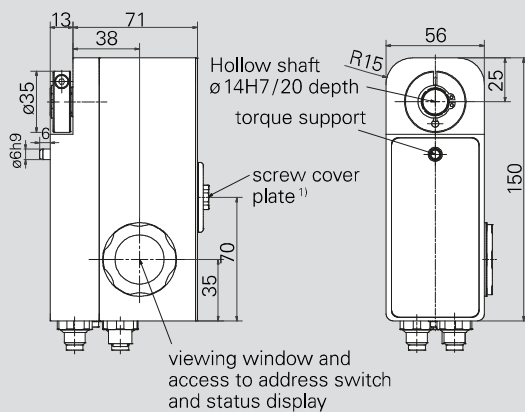
## Characteristic curve for PSW 30\_-8



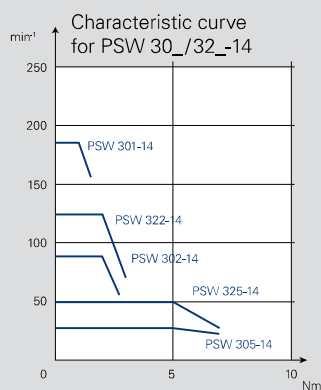
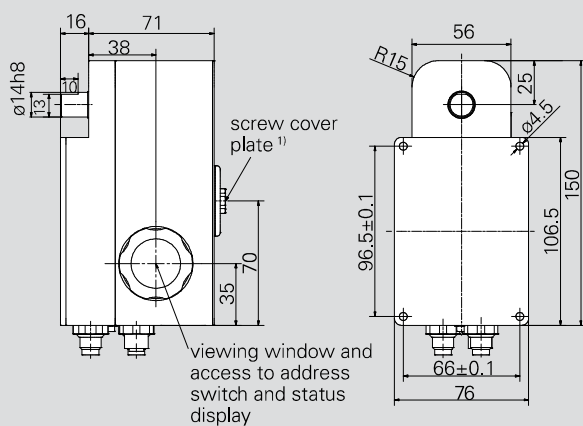
For details of the connections see also p. 10



**PSW 30\_/32\_-14 (with hollow shaft)**



**PSW 30\_/32\_-14-V (with solid shaft)**



For details of the connections see also p. 10

<sup>1)</sup> over a rotating manual adjustment shaft SW6/8 depth hex

Product	Nominal torque	Self-holding torque	Nominal rated speed	Nominal power output
PSW 301-14	1 Nm	0.5 Nm	180 min <sup>-1</sup>	25 W
PSW 302-14	2 Nm	1 Nm	90 min <sup>-1</sup>	25 W
PSW 305-14	5 Nm	2.5 Nm	35 min <sup>-1</sup>	25 W
PSW 322-14	2 Nm	1 Nm	125 min <sup>-1</sup>	35 W
PSW 325-14	5 Nm	2.5 Nm	50 min <sup>-1</sup>	35 W

## Data interfaces

CANopen, PROFIBUS DP, DeviceNet, Modbus RTU, Sercos, EtherCAT, PROFINET, EtherNet/IP, POWERLINK, IO-Link

Start-up duration	20 % (basis time 600s) at nominal torque
Mode of operation	S3
Supply voltage	24 V/DC $\pm$ 10 % Galvanically separated between control and motor and bus
Nominal current	PSW 30_: 2.4 A, PSW 32_: 3.1 A
Power consumption (control unit)	0.1 A
Positioning accuracy Absolute measurement of position taken directly at the output shaft	0.9°
Positioning range	250 rotations not subject to mechanical limits
Shock resistance in accordance with IEC/DIN EN 60068-2-27	50g 11 ms
Vibration resistance in accordance with IEC/DIN EN 60068-2-6	10..55 Hz 1.5 mm/ 55..1 000 Hz 10g/ 10..2 000 Hz 5g
Output shaft	14 mm solid shaft or 14 mm hollow shaft with adjustable collar
Maximum axial force	20 N
Maximum radial force	40 N
Ambient temperature	0..45°C
Storage temperature	-10..70°C
Protection class	IP68 at standstill, IP66 during rotation (tested with water)*
Material	stainless steel
Weight	1 200 g
Certificates	CE

\* Welded V2A housing, Output shaft sealed with quad-ring

**The order key and accessories can be found on p. 18 / 19.**



**IP 68**



Product	Nominal torque	Self-holding torque	Nominal rated speed	Nominal power output
PSW 311-8	1 Nm	0.5 Nm	180 min <sup>-1</sup>	25 W
PSW 312-8	2 Nm	1 Nm	100 min <sup>-1</sup>	25 W
PSW 315-8	5 Nm	2.5 Nm	35 min <sup>-1</sup>	25 W

## Data interfaces

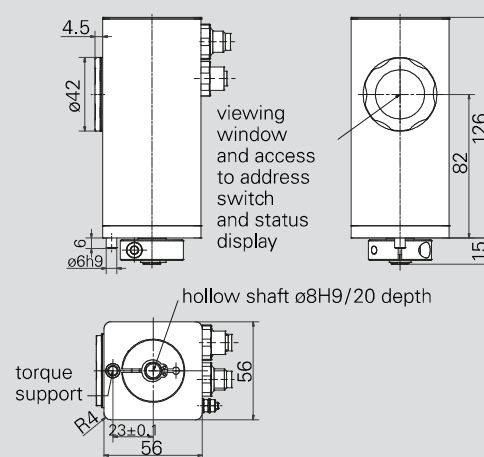
CANopen, PROFIBUS DP, DeviceNet, Modbus RTU, Sercos, EtherCAT, PROFINET, EtherNet/IP, POWERLINK, IO-Link

Start-up duration	20 % (basis time 600 s) at nominal torque
Mode of operation	S3
Supply voltage	24 VDC $\pm$ 10 % Galvanically separated between control and motor and bus
Nominal current	2.2 A
Power consumption (control unit)	0.1 A
Positioning accuracy Absolute measurement of position taken directly at the output shaft	0.9°
Positioning range	250 rotations not subject to mechanical limits
Shock resistance in accordance with IEC/DIN EN 60068-2-27	50g 11 ms
Vibration resistance in accordance with IEC/DIN EN 60068-2-6	10..55 Hz 1.5 mm/ 55..1 000 Hz 10 g/ 10..2 000 Hz 5 g
Output shaft	8 mm solid shaft or 8 mm hollow shaft with adjustable collar
Maximum axial force	20 N
Maximum radial force	40 N
Ambient temperature	0..45°C
Storage temperature	-10..70°C
Protection class	IP 68 at standstill, IP 66 during rotation (tested with water)*
Material	stainless steel
Weight	700 g
Certificates	CE

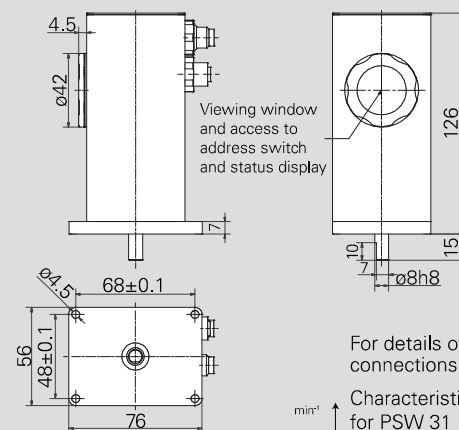
\* Welded V2A housing, Output shaft sealed with quad-ring

**The order key and accessories can be found on p. 18 / 19.**

**PSW 31\_-8 (with hollow shaft)**

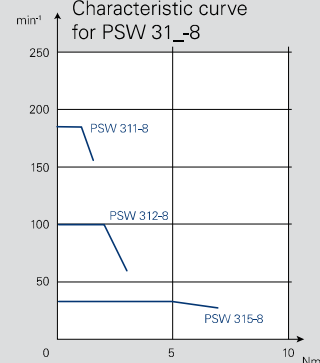


**PSW 31\_-8-V (with solid shaft)**



For details of the connections see also p. 10

Characteristic curve  
for PSW 31 -8

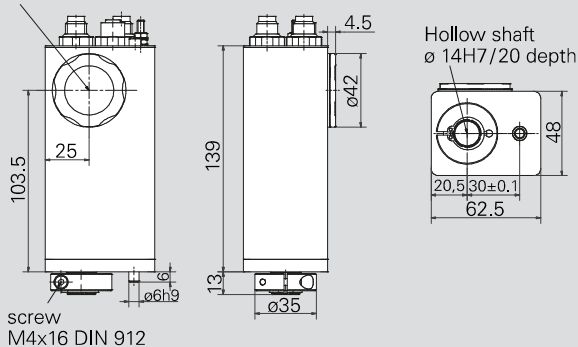


IP 68



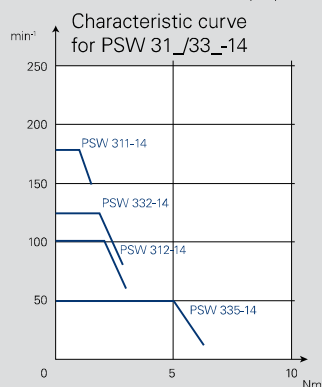
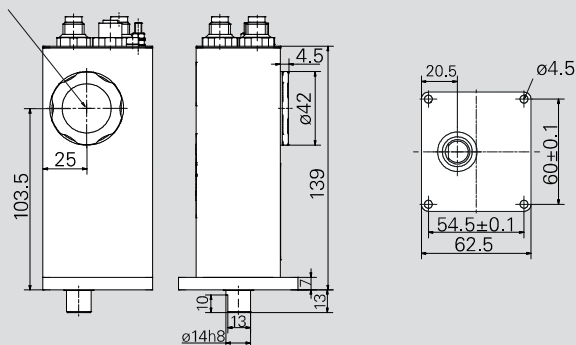
## PSW 31\_/33\_-14 (with hollow shaft)

viewing window and access to address switch and status display



## PSW 31\_/33\_-14-V (with solid shaft)

viewing window and access to address switch and status display



For details of the connections see also p. 10

Product	Nominal torque	Self-holding torque	Nominal rated speed	Nominal power output
PSW 311-14	1 Nm	0.5 Nm	180 min <sup>-1</sup>	25 W
PSW 312-14	2 Nm	1 Nm	100 min <sup>-1</sup>	25 W
PSW 332-14	2 Nm	1 Nm	125 min <sup>-1</sup>	35 W
PSW 335-14	5 Nm	2.5 Nm	50 min <sup>-1</sup>	35 W

### Data interfaces

CANopen, PROFIBUS DP, DeviceNet, Modbus RTU, Sercos, EtherCAT, PROFINET, EtherNet/IP, POWERLINK, IO-Link

Start-up duration	20 % (basis time 600 s) at nominal torque
Mode of operation	S3
Supply voltage	24 VDC $\pm$ 10 % Galvanically separated between control and motor and bus
Nominal current	PSW 31_: 2.4 A, PSW 33_: 3.1 A
Power consumption (control unit)	0.1 A
Positioning accuracy	0.9° Absolute measurement of position taken directly at the output shaft
Positioning range	250 rotations not subject to mechanical limits
Shock resistance	50 g 11 ms in accordance with IEC/DIN EN 60068-2-27
Vibration resistance	10..55 Hz 1.5 mm/ 55..1 000 Hz 10 g/ 10..2 000 Hz 5 g in accordance with IEC/DIN EN 60068-2-6
Output shaft	14 mm solid shaft or 14 mm hollow shaft with adjustable collar
Maximum axial force	20 N
Maximum radial force	40 N
Ambient temperature	0..45 °C
Storage temperature	-10..70 °C
Protection class	IP68 at standstill, IP66 during rotation (tested with water)*
Material	stainless steel
Weight	700 g
Certificates	CE

\* Welded V2A housing, Output shaft sealed with quad-ring

The order key and accessories can be found on p. 18 / 19.