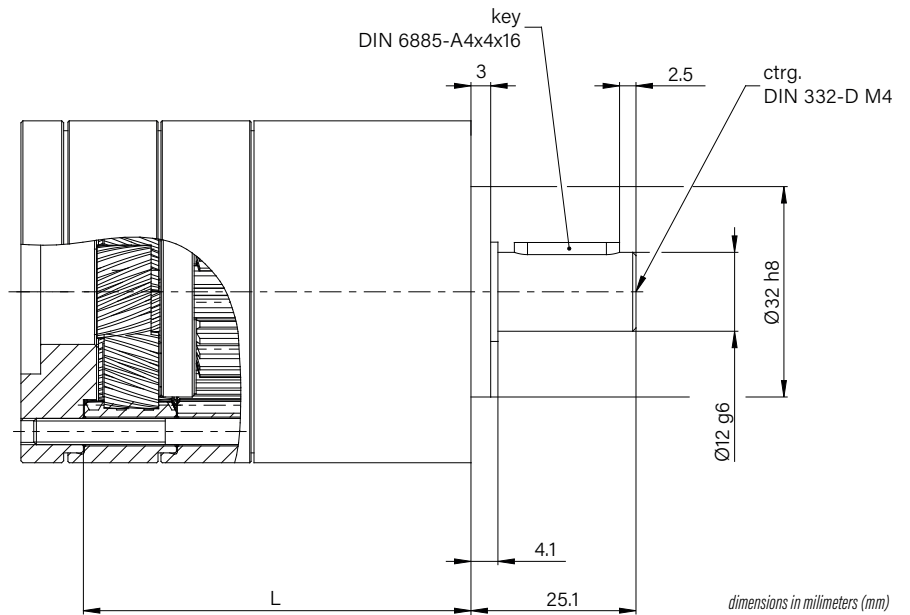
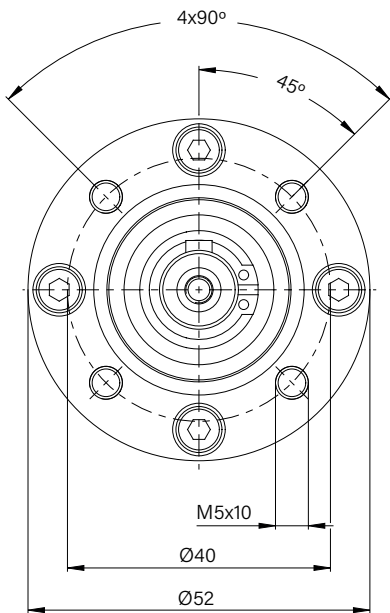


52 planetary gear

Planetary gear with outer diameter 52mm.
Configure your motor providing robustness and versatility.
Easy gear combination for a high performance of any application.



MODULAR SYSTEM

BRAKE		MOTOR		GEAR		ECU	
12 - 24V <1.5Nm L=35.6mm		263 motor series Integrated Hall Sensor 2+2 - 6+6 pulses 2 channels at 90°		1 -3 stages 4:1 - 236:1 Ø52mm		Optional: CANopen protocol	

MAIN PLANETARY GEAR FEATURES

	1 STAGE	2 STAGES	3 STAGES
TECHNICAL DATA			
Permissible output torque TAB (CB=1.0)	4.0 Nm	12.0 Nm	25.0 Nm
Gear efficiency approx.	0.8	0.8	0.7
Max. Gear backlash	0.7 °DEG	0.8 °DEG	0.8°DEG
OUTPUT SIDE WITH BALL BEARING			
Max. radial load (centre of output shaft)	200.0 N	320.0 N	450.0 N
Max. axial load	60.0 N	100.0 N	150.0 N
Max. permissible contact pressure	500.0 N	500.0 N	500.0 N
Weight approx.	700 g	900 g	1100 g
Length approx.	44.8 mm	59.0 mm	73.2 mm
REDUCTIONS			
	4:1 (3.71)	14:1 (13.73)	51:1 (50.89)
	4:1 (4.29)	16:1 (15.88)	308:1 (307.55)
	5:1 (5.18)	18:1 (18.37)	59:1 (58.86)
	7:1 (6.75)	19:1 (19.20)	68:1 (68.07)
		22:1 (22.21)	71:1 (71.16)
		25:1 (25.01)	79:1 (78.72)
		27:1 (26.85)	93:1 (92.70)
		29:1 (28.93)	95:1 (95.18)
		35:1 (34.98)	100:1 (99.51)
		46:1 (45.56)	107:1 (107.21)
			115:1 (115.08)
			124:1 (123.98)
			130:1 (129.62)
			139:1 (139.14)
			150:1 (149.90)
			169:1 (168.85)
			181:1 (181.25)
			195:1 (195.27)
			236:1 (236.10)

