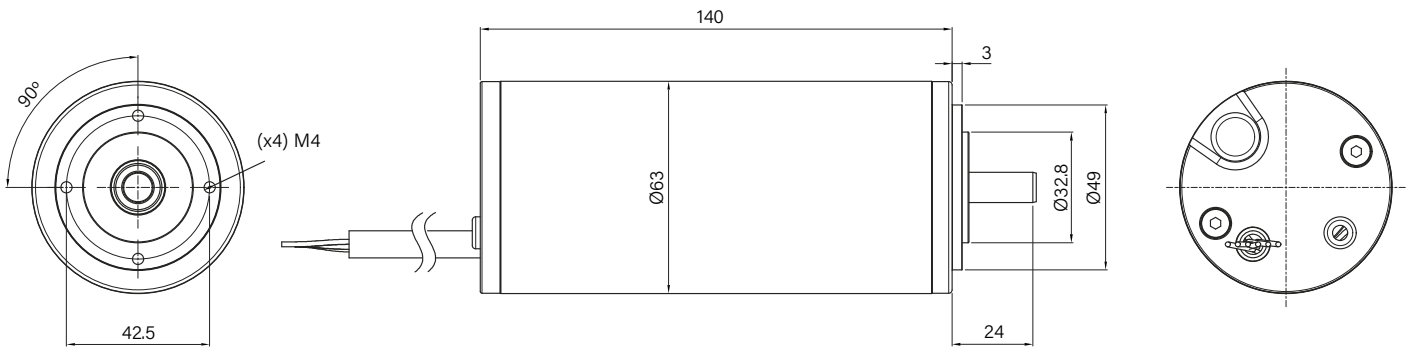
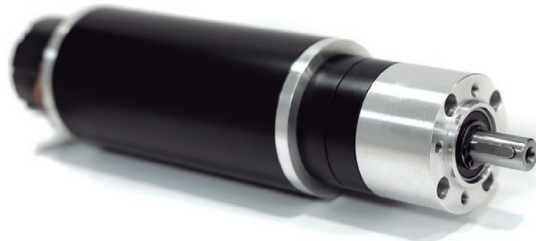


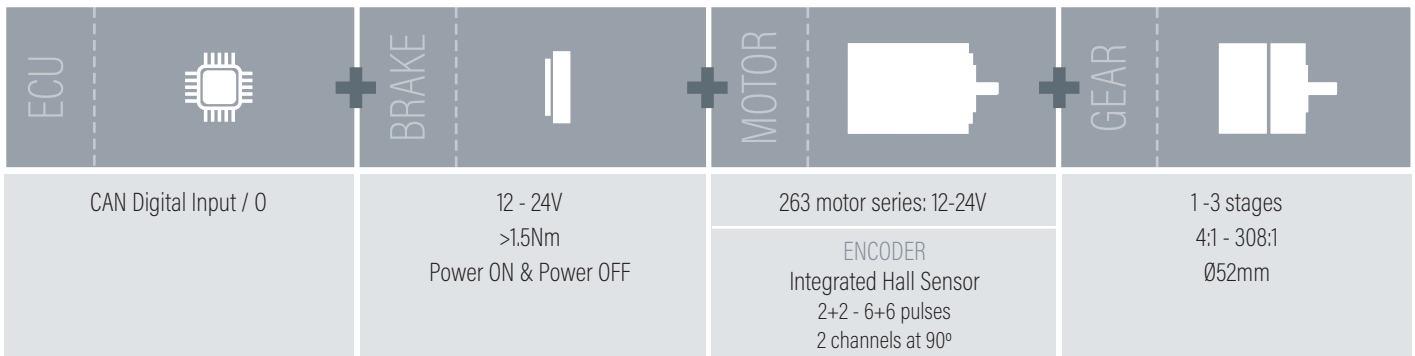
263 motor series

Highly MODULAR and compact DC brushed motor
 Integrated HALL SENSOR
 Optional ELECTRONICS: CAN Digital Input / O
 Manufactured in 12V and 24V
 Designed to CUSTOMIZE and meet your needs

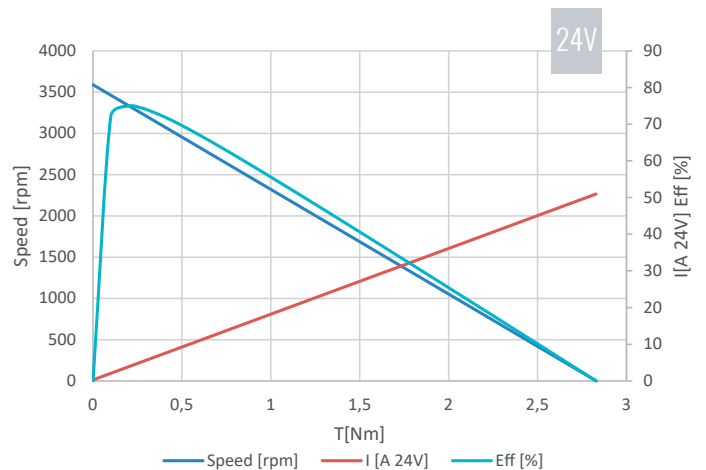
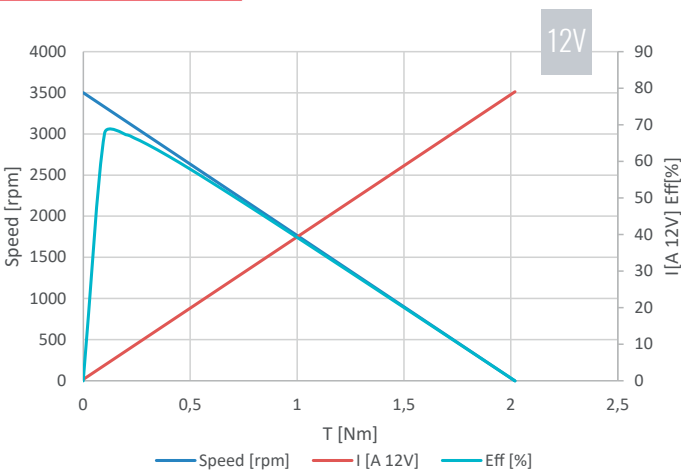


all dimensions in millimeters (mm)

MODULAR SYSTEM



CURVES



MAIN MOTOR FEATURES

	SIGN	UNIT	VALUE 12V	VALUE 24V
Rated Voltage	U_N	V	12	24
Rated power input	P_{er}	W	108	120
Rated power output	P_{mr}	W	75.4	91.3
Rated speed	n_N	rpm	3000	3230
Rated torque	M_N	Nm	0.24	0.27
Rated current	I_N	A	9	5
Rated efficiency	η_N	%	70	76
No Load speed	n_0	rpm	3500	3590
No Load current	I_0	A	1.8	1
Stall current	I_s	A	79	55
Demagnetization current	I_E	A	≥ 80	≥ 50
Stall Torque	Γ_s	Nm	2	2.76
Maximum continuous torque	M_{max}	Nm	0.24	0.27
Voltage constant	k_E	V*s/rad	0.031	0.062
Torque constant	k_M	Nm/A	0.031	0.062
Starting Voltage	U_s	V	2	2
Inertia	J_R	gcm ²	817.02	871.95

EMC Degree	ISO 14980 - FULFILL R10 TESTS - EN 50121
Bearing type	2 ball bearings
Permissible axial shaft loads	F_{axial} 150N
Permissible radial shaft loads	F_{radial} 150N
IP	Up to IP69K
Insulation class DIN VDE 0530	Class F

