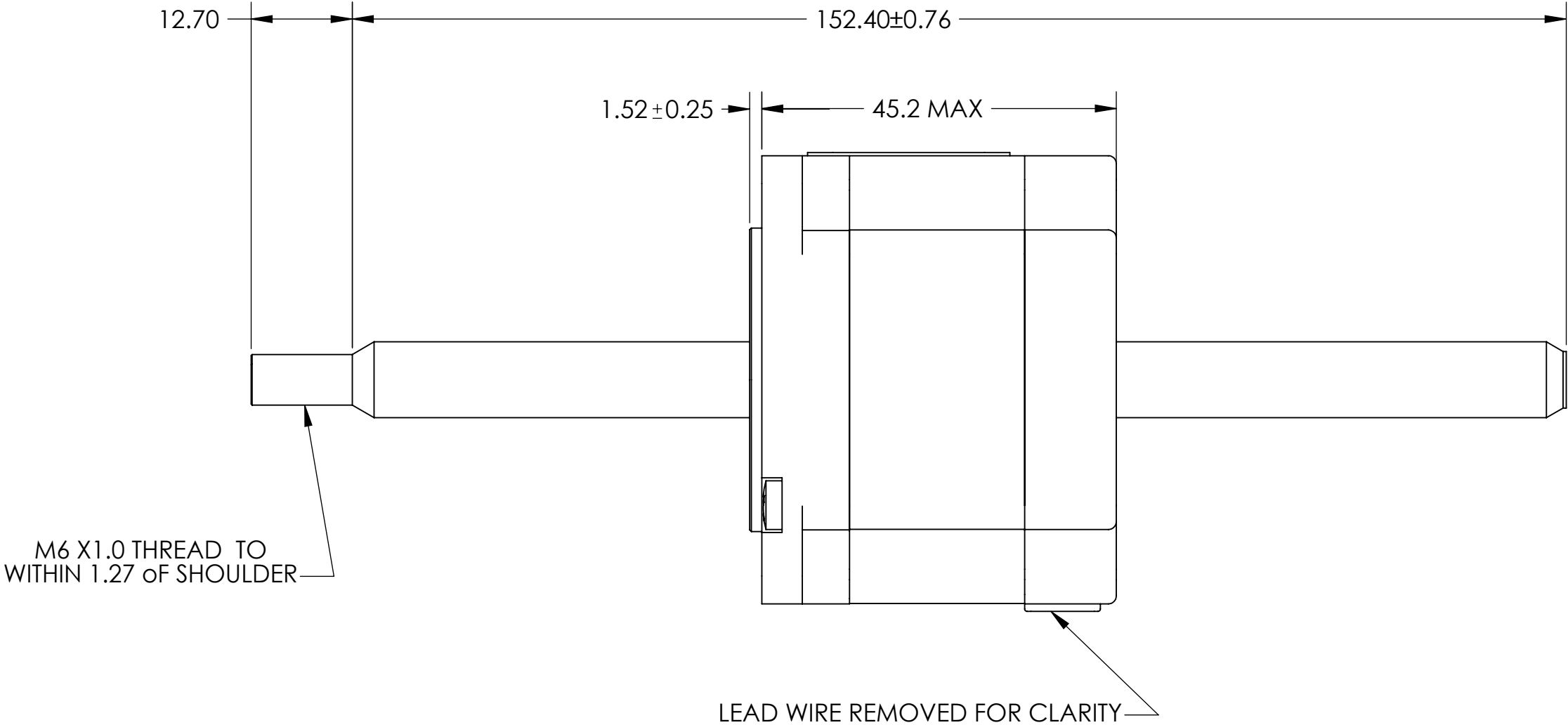
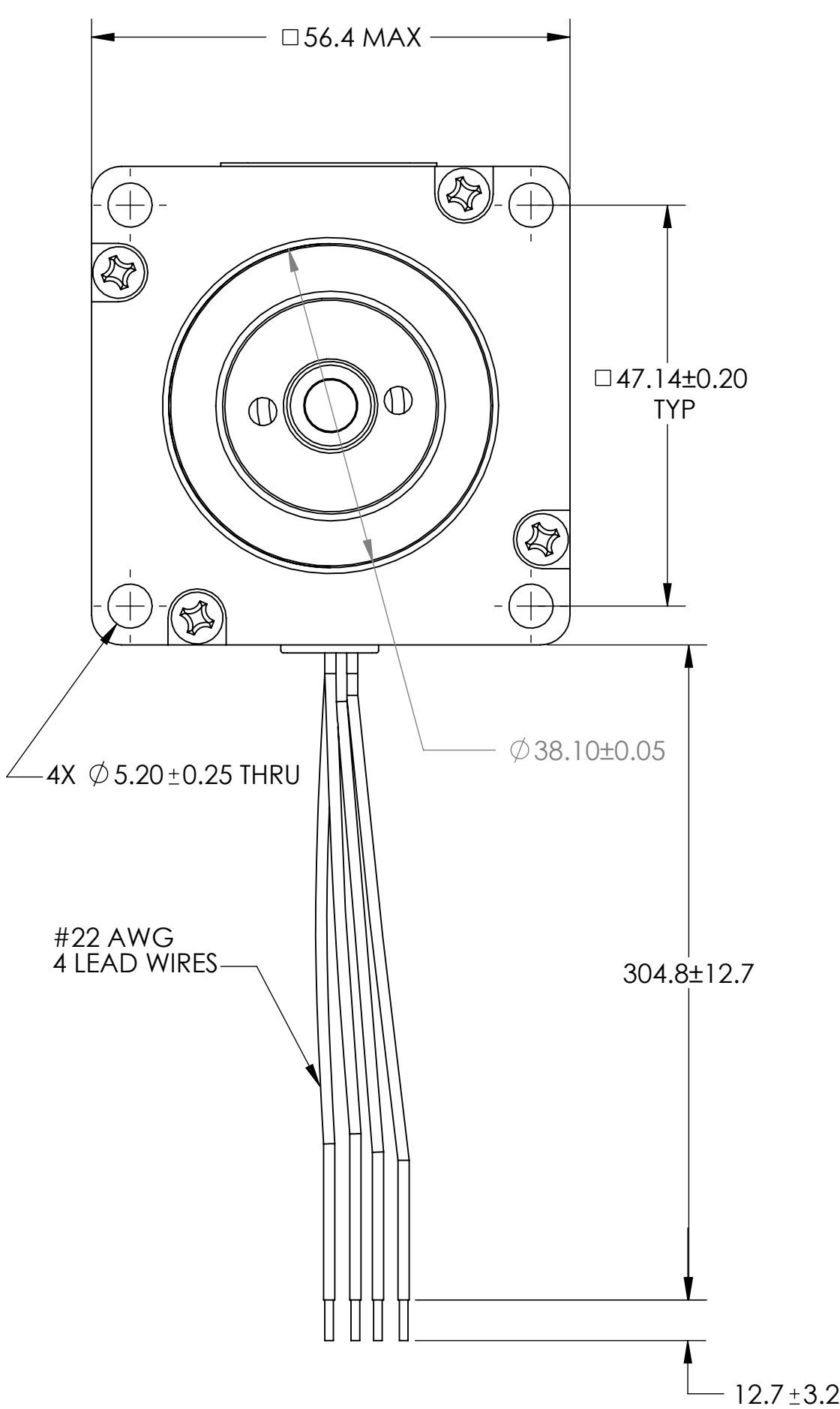
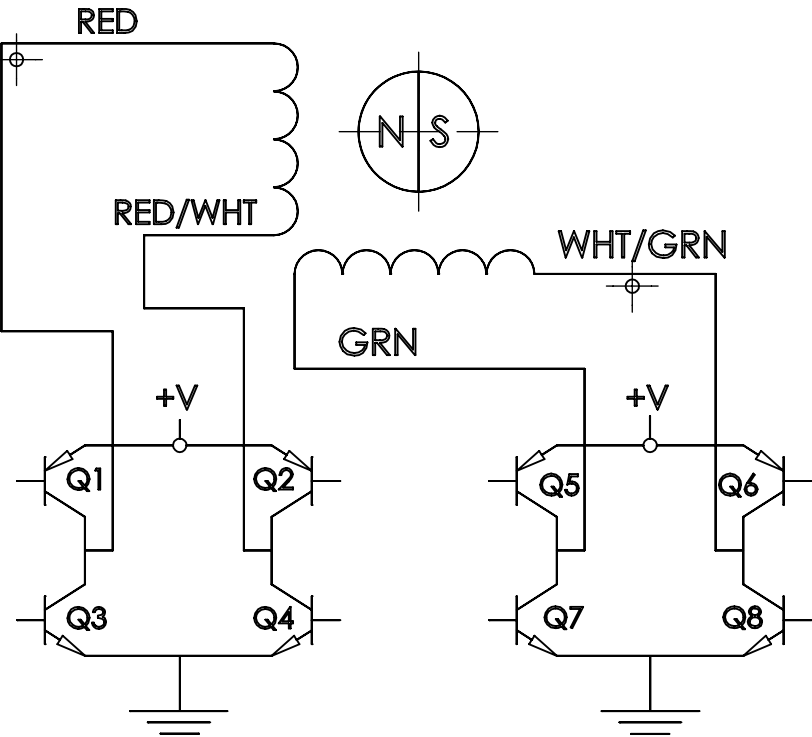


REVISIONS			
REV.	DESCRIPTION	DATE	ECO NO.
-	RELEASE FOR PRODUCTION	02/09/2011	27892
A	UPDATE MIN. FORCE 170 LBS. WAS TBD; BB	11/12/2015	Hybrid #2692
B	UPDATE BORDER AND LABEL	6/11/2020	Hybrid #6537
C	UPDATED SPECIFICATIOINS: 100PPS WAS 300PPS ; SS	06/19/2023	HLM #9023



WIRING DIAGRAM








SPECIFICATIONS	
OPERATING VOLTAGE	5 VDC
RESISTANCE PER PHASE	3.8 OHMS ±10%
INSULATION RESISTANCE	50 MOHMS
POWER CONSUMPTION (TOTAL)	13 WATTS
MINIMUM FORCE (100 PPS)	170 LBS
LINEAR TRAVEL PER STEP	0.0079 mm
DIRECTION OF TRAVEL	BI-DIRECTIONAL
BEARING	BALL
WEIGHT REF.	511g
OPERATING TEMPERATURE	-20 °C TO +55 °C
STORAGE TEMPERATURE	-40 °C TO +100 °C
ABOVE VALUES BASED ON L/R DRIVE AT 25 °C AMBIENT	

BIPOLAR STEPPING SEQUENCE						
EXTEND OUT-CW	STEP	Q2-Q3	Q1-Q4	Q6-Q7	Q5-Q8	RETRACT IN-CCW
↓	1	ON	OFF	ON	OFF	↑
	2	OFF	ON	ON	OFF	
	3	OFF	ON	OFF	ON	
	4	ON	OFF	OFF	ON	
	1	ON	OFF	ON	OFF	

LOGO

57F4A-05-099
YY/WW

LABEL INFORMATION

ALL MATERIALS, PROCESSES, & PACKAGING MUST BE COMPLIANT WITH AMETEK ENVIRONMENTAL SPECIFICATION ES0010.	ALL SIGNATURES REQUIRED FOR APPROVAL AND ORIGINAL DRAWING MASTERS ARE CONTROLLED ELECTRONICALLY.	DRAWN BY	TITLE			 ADVANCED MOTION SOLUTIONS	 Motion Solutions														
	INTERPRET GD&T PER ASME Y14.5 - 2009	BB																			
	STANDARD BLOCK TOLERANCES UNLESS OTHERWISE SPECIFIED:	DATE	LINEAR ACTUATOR																		
		02/09/11																			
PROPRIETARY NOTICE THIS DOCUMENT CONTAINS CONFIDENTIAL AND TRADE SECRET INFORMATION AND IS DISCLOSED TO THE RECEIVER IN CONFIDENCE. THE RECEIVER, BY RECEPTION AND RETENTION OF THIS DOCUMENT ACCEPTS THIS DOCUMENT IN CONFIDENCE AND AGREES THAT, EXCEPT AS AUTHORIZED IN WRITING BY AN OFFICER OF AMETEK, IT WILL (1) NOT USE ANY PORTION OF THIS DOCUMENT OR ANY COPY THEREOF OR THE CONFIDENTIAL OR TRADE SECRET INFORMATION THEREIN; (2) NOT COPY ANY PORTION OF THIS DOCUMENT OR THE CONFIDENTIAL OR TRADE SECRET INFORMATION THEREIN; AND (3) UPON COMPLETION OF THE NEED TO RETAIN THIS DOCUMENT, OR UPON DEMAND, RETURN THIS DOCUMENT, ALL COPIES THEREOF, AND ALL MATERIAL COPIED THEREFROM. COPYRIGHT © 2008	<table><tr><th>INCH</th><th>MM</th></tr><tr><td>DECIMALS: X</td><td>±.020 X ±.038</td></tr><tr><td>DECIMALS: X.X</td><td>±.015 X.X ±.025</td></tr><tr><td>DECIMALS: X.XX</td><td>±.010 X.XX ±.013</td></tr><tr><td>DECIMALS: X.XXX</td><td>±.005 X.XXX ±.013</td></tr><tr><td>DECIMALS: X.XXXX</td><td>±.0005 X.XXXX ±.013</td></tr><tr><td>ANGLES: ±0° 30'</td><td>FRACTIONS: ±1/64</td></tr></table>	INCH	MM	DECIMALS: X	±.020 X ±.038	DECIMALS: X.X	±.015 X.X ±.025	DECIMALS: X.XX	±.010 X.XX ±.013	DECIMALS: X.XXX	±.005 X.XXX ±.013	DECIMALS: X.XXXX	±.0005 X.XXXX ±.013	ANGLES: ±0° 30'	FRACTIONS: ±1/64	MATERIAL:	FINISH:	HEAT TREAT SPEC:	www.haydonkerkpittman.com		
INCH	MM																				
DECIMALS: X	±.020 X ±.038																				
DECIMALS: X.X	±.015 X.X ±.025																				
DECIMALS: X.XX	±.010 X.XX ±.013																				
DECIMALS: X.XXX	±.005 X.XXX ±.013																				
DECIMALS: X.XXXX	±.0005 X.XXXX ±.013																				
ANGLES: ±0° 30'	FRACTIONS: ±1/64																				
REMOVE ALL BURRS, BREAK SHARP EDGES .25mm [.010] MAX.			<table><tr><td>DO NOT SCALE DWG</td><td>SHT 1 OF 2</td><td>DWG Name:</td><td>Revision</td></tr><tr><td></td><td>DWG SIZE C</td><td>57F4A-05-099</td><td>C</td></tr></table>				DO NOT SCALE DWG	SHT 1 OF 2	DWG Name:	Revision		DWG SIZE C	57F4A-05-099	C							
DO NOT SCALE DWG	SHT 1 OF 2	DWG Name:	Revision																		
	DWG SIZE C	57F4A-05-099	C																		