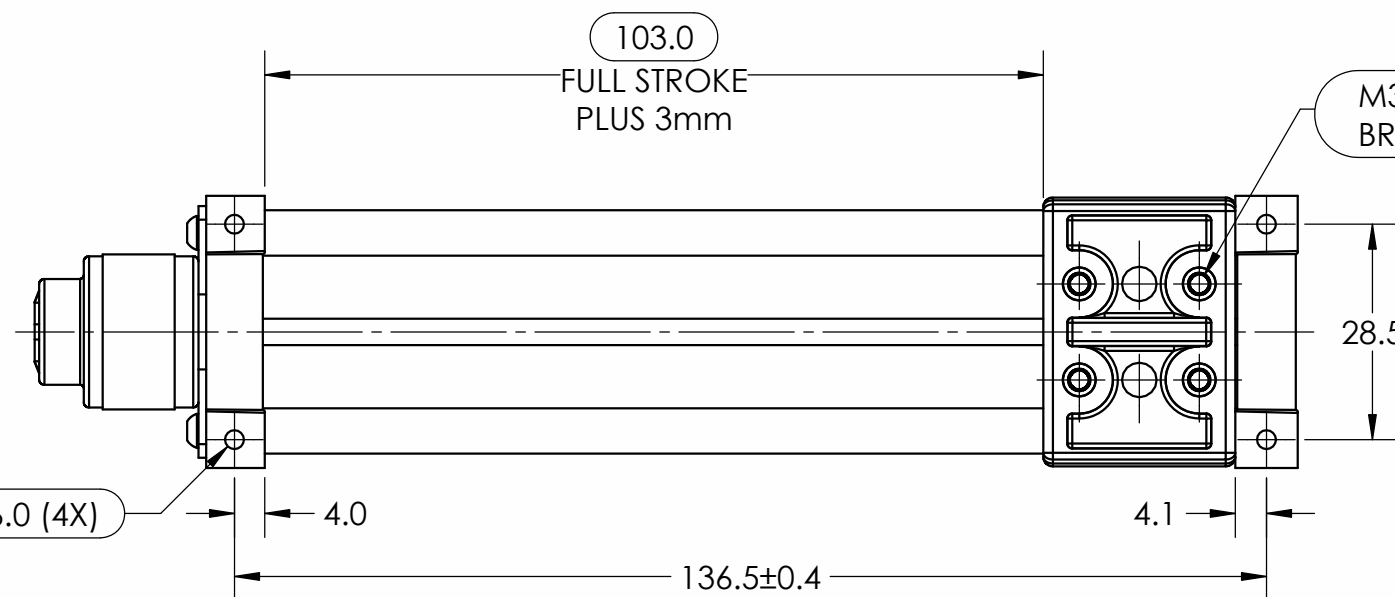
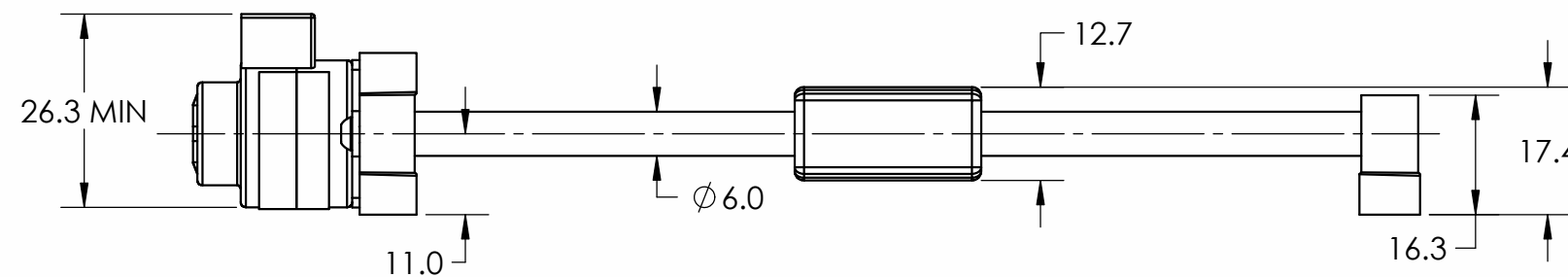
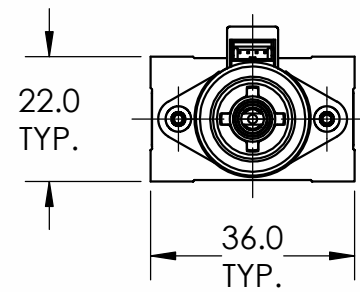
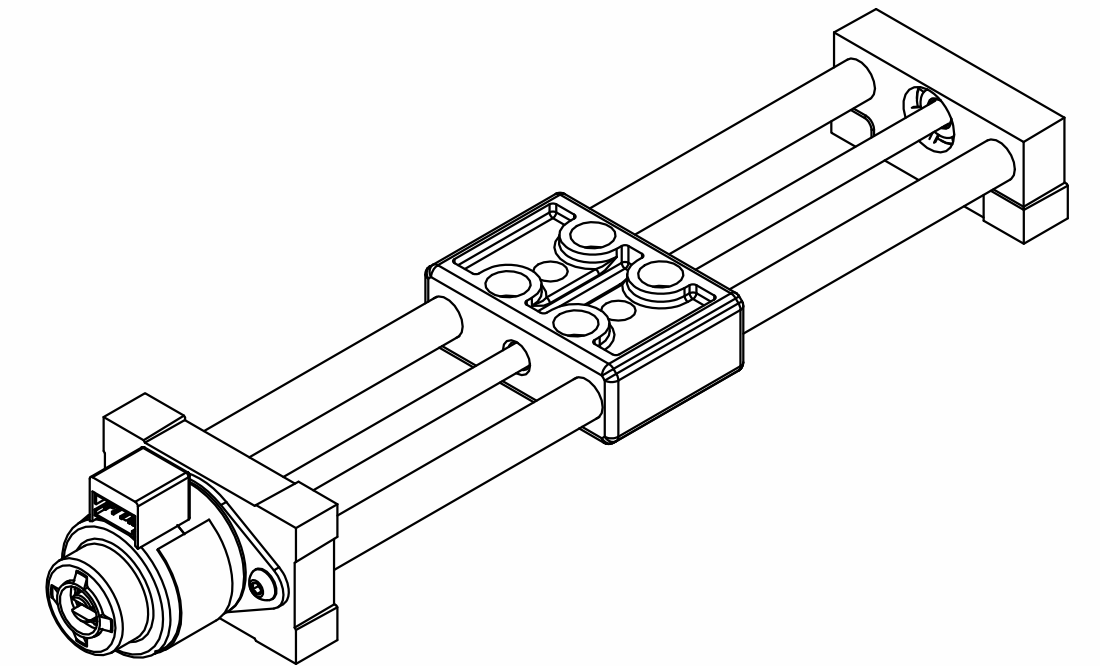
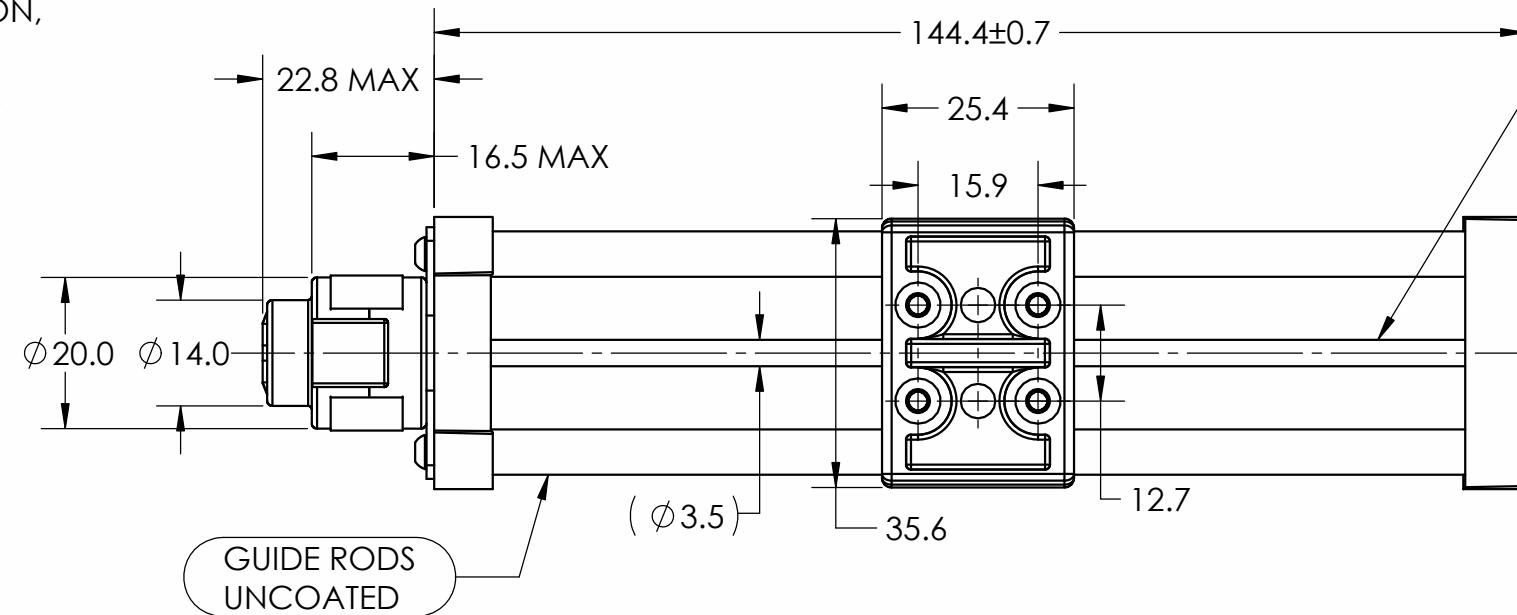


**NOTES:** UNLESS OTHERWISE SPECIFIED

1. ALL DIMENSIONS SHOWN ARE MM.
2. PART TO BE FREE OF DIRT, BURRS, OIL OR ANY OTHER SURFACE CONTAMINANT.
3. PACKAGE TO PROTECT.
4. THE SYMBOL  $\varnothing$  DENOTES INSPECTION DIMENSION, INCLUDING ASSOCIATED GD&T.
5. THE SYMBOL  $\square$  DENOTES KEY CHARACTERISTIC.
6. TEST PER ES18-501.

REVISION			
REV.	DESCRIPTION	DATE	ECO NO.
-	RELEASE FOR PRODUCTION;	03/31/2020	Hybrid #6425



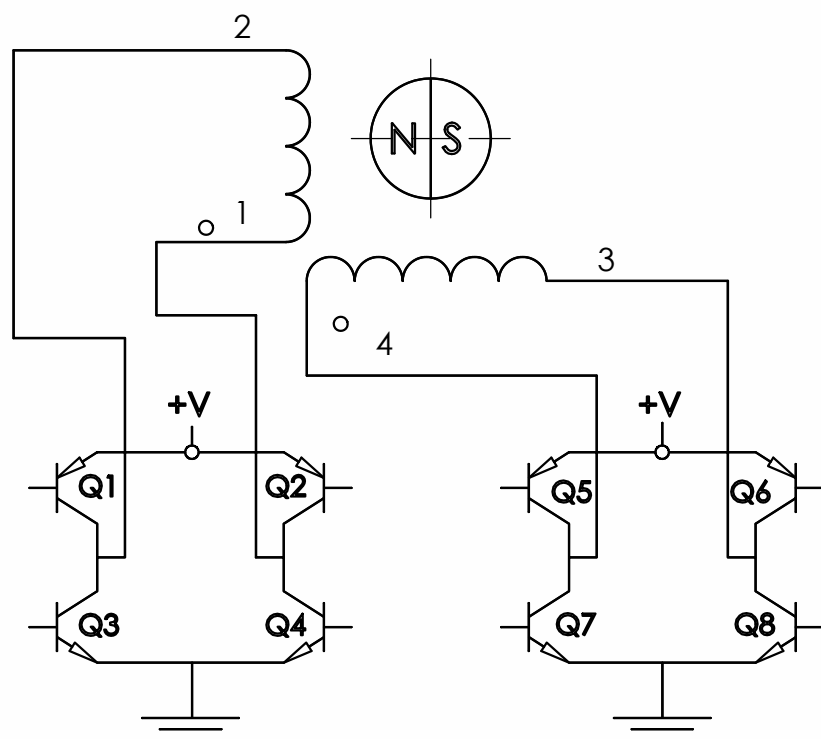
LOGO MSA02S-C0039-810 YY/WW  
B19440-05-020 YY/WW

**LABEL INFORMATION**

M3X0.5 - 6H ∇ 6.0 (4X)

SPECIFICATIONS	
WINDING VOLTAGE	5 VDC
RESISTANCE PER PHASE	14.0 OHMS +/-10%
INDUCTANCE PER PHASE	6.2 mH
CURRENT PER PHASE (RMS)	350 mA
POWER CONSUMPTION (TOTAL)	3.38 WATTS
INSULATION RESISTANCE	50 MOHMS
INSULATION CLASS	CLASS B
MOTOR STEP ANGLE	7.5 DEGREE
RESOLUTION (1.0 mm LEAD)	0.0208 mm/STEP
BEARING FREE END	BUSHING
BEARINGS MOTOR END	BALL
OPERATING TEMPERATURE	0°C TO +55°C
STORAGE TEMPERATURE	0°C TO +80°C
MAXIMUM NO LOAD SPEED	TBD PPS
AS DETERMINED BY TEST SPECIFICATION ES18-501	

**WIRING DIAGRAM**



OUT	BIPOLAR STEP	Q2-Q3	Q1-Q4	Q6-Q7	Q5-Q8	IN
	1	ON	OFF	ON	OFF	
2	OFF	ON	ON	OFF	↑	
3	OFF	ON	OFF	ON	↑	
4	ON	OFF	OFF	ON	↑	
1	ON	OFF	ON	OFF	↑	

ALL MATERIALS, PROCESSES, & PACKAGING MUST BE COMPLIANT WITH AMETEK ENVIRONMENTAL SPECIFICATION ES0010.

PROPRIETARY NOTICE: THIS DOCUMENT CONTAINS CONFIDENTIAL AND TRADE SECRET INFORMATION AND IS DISCLOSED TO THE RECEIVER IN CONFERENCE. THE RECEIVER, BY RECEIVING AND RETENTION OF THIS DOCUMENT, ACCEPTS THIS DOCUMENT IN CONFERENCE AND AGREES THAT IT IS NOT TO BE DISCLOSED TO ANY OTHER PARTY WITHOUT THE WRITTEN PERMISSION OF AMETEK. IT WILL (1) NOT USE ANY PORTION OF THIS DOCUMENT OR ANY COPY THEREOF OR THE CONFIDENTIAL OR TRADE SECRET INFORMATION THEREIN, OR (2) NOT COPY ANY PORTION OF THIS DOCUMENT, OR (3) NOT DISCLOSE TO OTHERS ANY PORTION OF EITHER THIS DOCUMENT OR THE CONFIDENTIAL OR TRADE SECRET INFORMATION THEREIN, AND (4) UPON COMPLETION OF THE NEED TO RETAIN THIS DOCUMENT, OR UPON DEMAND, RETURN THIS DOCUMENT. ALL COPIES THEREOF AND ALL MATERIAL COPIED THEREFROM COPYRIGHT © 2008.

STANDARD BLOCK TOLERANCES UNLESS OTHERWISE SPECIFIED:

	INCH	MM
DECIMALS: X	±.020	X ±0.38
DECIMALS: X.X	±.015	X.X ±0.25
DECIMALS: X.XX	±.010	X.XX ±0.13
DECIMALS: X.XXX	±.005	X.XXX ±0.13
DECIMALS: X.XXXX	±.0005	X.XXXX ±0.013
ANGLES: ±0° 30'	FRACTIONS: ±1/64	

REMOVE ALL BURRS, BREAK SHARP EDGES .25mm [.010] MAX.

DRAWN BY: MT  
DATE: 03/31/2020  
MATERIAL: FINISH: HEAT TREAT SPEC:

TITLE: SZ02 MINI-SLIDE  
100mm STROKE, 1.0mm LEAD  
G4 19000 SERIES CAN-STACK

AMETEK ADVANCED MOTION SOLUTIONS  
Haydon kerk Motion Solutions  
www.haydonkerkpitman.com

DO NOT SCALE DWG SHT 1 OF 2 DWG Name: MSA02S-C0039-810 Revision: -

THIRD ANGLE PROJECTION